



# Safety Solutions for Smart Cities

Avigilon provides end-to-end security solutions that cover more areas with fewer cameras, helping cities foster citizen safety and enabling faster investigations while being conscious of public budgets.

## Powerful Search

Avigilon Appearance Search™ technology allows you to sort through hours of video with ease to quickly locate a specific person or vehicle of interest across all cameras and sites in real-time.

## Real-time Notification

Our large portfolio of cameras ensures monitoring will be present day or night. Our self-learning video analytics provide instant alerts of events to police, helping to improve response times in active situations.

## Quick Action

ACM™ generated door events allow you to create rule-based actions and notifications for quick on-site responses, including immediate lockdown.

## Streamlined Identification

Avigilon HD License Plate Recognition (LPR) accurately captures license plates regardless of lighting conditions, helping aid in traffic law enforcement and toll collection.

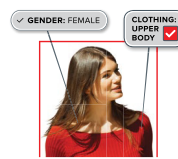
## Easy Integration

Avigilon solutions are built on an open platform, allowing you to leverage previous 3rd-party investments that are ONVIF® compliant and expand existing command centres to ensure city safety.

## Efficient Bandwidth Management

Avigilon High Definition Stream Management (HDSM)™ and HDSM SmartCodec™ technologies reduce bandwidth and storage needs while maintaining image quality.

## Avigilon Solutions for Government



### Avigilon Appearance Search Technology

A sophisticated AI search engine that helps you quickly identify a specific person or vehicle and track their route throughout a site in real-time or during investigations.



### Self-learning Video Analytics

Recognise and detect the movements of people and vehicles, notifying operators of events that may need further investigation.



### Access Control Manager (ACM) System

Works together with ACC™ software to produce action-based alarms, and notifications so you can respond quickly to events.

**H4 IR PTZ Camera Line** Combines Avigilon patented self-learning video analytics with zoomable infrared (IR) technology to provide broad coverage and exceptional image quality in a range of lighting conditions and environments.

**H4 Edge Solution (ES) Camera Line** Provides an all-in-one intelligent surveillance solution that is perfect for remote location and records video directly to an onboard solid-state drive.

**License Plate Recognition (LPR)** Captures license plates in a variety of conditions, day or night.

Avigilon, a Motorola Solutions company, designs, develops, and manufactures video analytics, network video management software and hardware, surveillance cameras, and access control solutions.

- 24/7 technical support by phone or online chat
- Complimentary software training

For more information, [asksales@avigilon.com](mailto:asksales@avigilon.com)

Depicted features and functionalities may not be currently available and, if and when available, may not be as depicted. Images and user interfaces have been simulated for illustrative purposes  
© 2018, Avigilon Corporation. All rights reserved. AVIGILON, the AVIGILON logo, ACC, ACCESS CONTROL MANAGER, ACM, AVIGILON APPEARANCE SEARCH, HIGH DEFINITION STREAM MANAGEMENT (HDSM), and HDSM SmartCodec are trademarks of Avigilon Corporation. Other names or logos mentioned herein may be the trademarks of their respective owners.

EMEA

# H4 LPC Camera Kit

For applications where it is critical to obtain character recognition at typical vehicle speeds, the Avigilon H4 License Plate Capture (LPC) camera Kit is designed to capture vehicle license plates—even in challenging lighting conditions. Using infrared illumination and visible light filtering, H4 LPC cameras enable Avigilon License Plate Recognition (LPR) analytics technology to accurately identify license plate characters from a range of distances.



## Works with Avigilon Control Center (ACC) Video Management Software

Enables Avigilon LPR analytics to automatically read license plate information from vehicles at higher speeds, and link it to live and recorded video.

### KEY FEATURES

Greater Accuracy at Higher Speeds

Integrated IR Illumination and Visible Light Filtering

4.7–84 mm Varifocal Lens

Multiple Included IR Illuminator Lens Options

POE+ for All Components

IP66 Rating

### BENEFITS

Allows license plate capture at vehicle speeds up to 100 km/hr (62 mph).

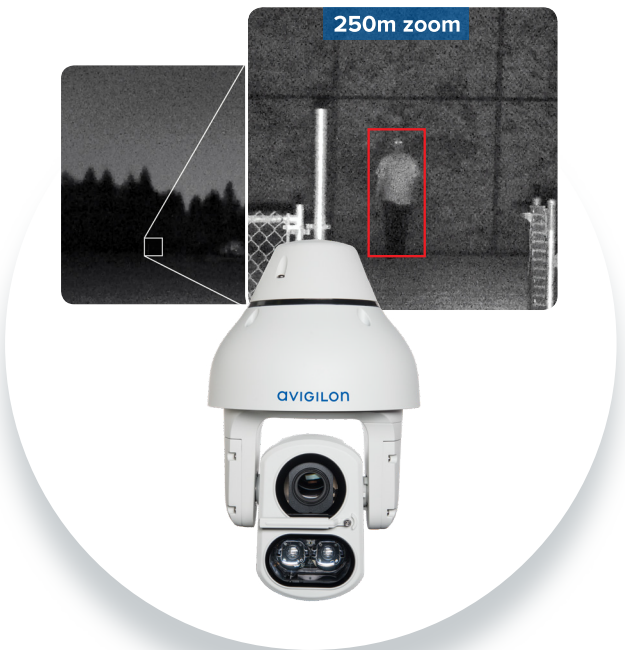
Gives the camera much greater depiction of characters on reflective number plates.

Multiple installation options for simplistic deployment in challenging installation scenarios.

Weather-resistant housing, with a temperature rating from -30–50°C (-22–122°F), allows for reliable operation in challenging climates.

[avigilon.com/h4-lpc](http://avigilon.com/h4-lpc) | [asksales@avigilon.com](mailto:asksales@avigilon.com)

# H4 IR PTZ Camera Line



The Avigilon H4 IR PTZ camera line combines patented Avigilon self-learning video analytics with zoomable infrared (IR) technology to provide broad coverage and exceptional image quality in a range of lighting conditions and environments.

The H4 IR PTZ camera's powerful zoom lens and IR technology allows users to see up to 250 meters (820 feet) in complete darkness. Choose from 45x zoom (1.3 MP) and 30x zoom (2 MP) lens options based on site requirements.

Available with a built in wiper, the H4 IR PTZ keeps the window surface clear of moisture and offers a rugged housing design for tough environments, making it well suited for a wide range of weather applications.

## KEY FEATURES

Fast and Precise Pan-Tilt-Zoom Capabilities

Zoomable IR Illumination

Wide Dynamic Range (WDR), Electronic Image Stabilization, and LightCatcher™ Technologies

IK10 Vandal Resistance and IP66 Certified

Self-Learning Video Analytics

## BENEFITS

Features continuous 360 degree rotation, enabling operators to more easily zoom in and out to capture and monitor activity in almost any direction.

IR illuminator automatically adjusts the IR intensity and angle according to the field of view to help ensure that the scene is illuminated uniformly.

Provides clear, usable images across the camera's full field of view, even when exposed to a variety of environmental or mechanical challenges.

Reliable weather- and dust-resistant housing offers extreme mechanical strength and durability.

Can detect and learn the home position scene upon initial setup, adapt to changes without manual calibration, and notify operators when important events occur.

[avigilon.com/h4-ir-ptz](http://avigilon.com/h4-ir-ptz) | [asksales@avigilon.com](mailto:asksales@avigilon.com)